

COULE

Deck Valves & Aqua Filler



Pack consists of:

1 x 34890CL Pair Deck Bath Valves

*1 x 033 Low Pressure Aqua Filler
with clic-clac waste*

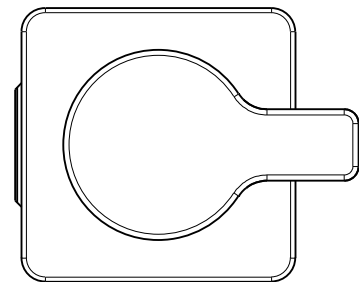
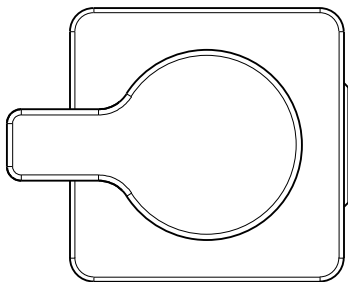
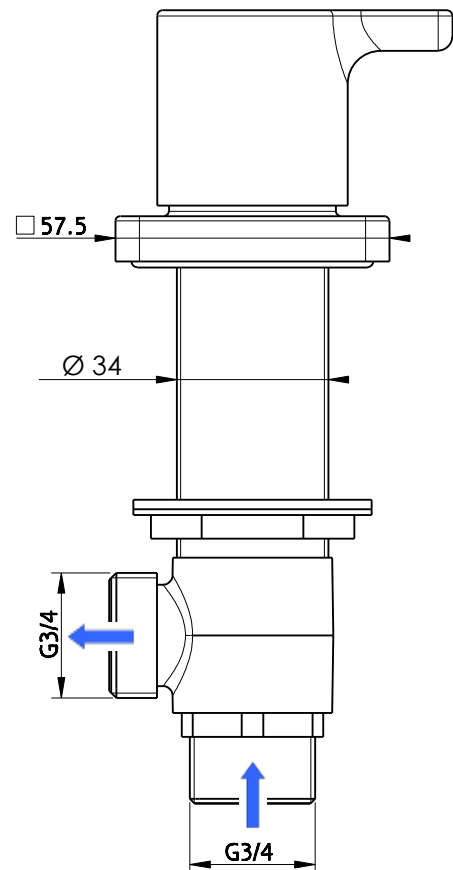
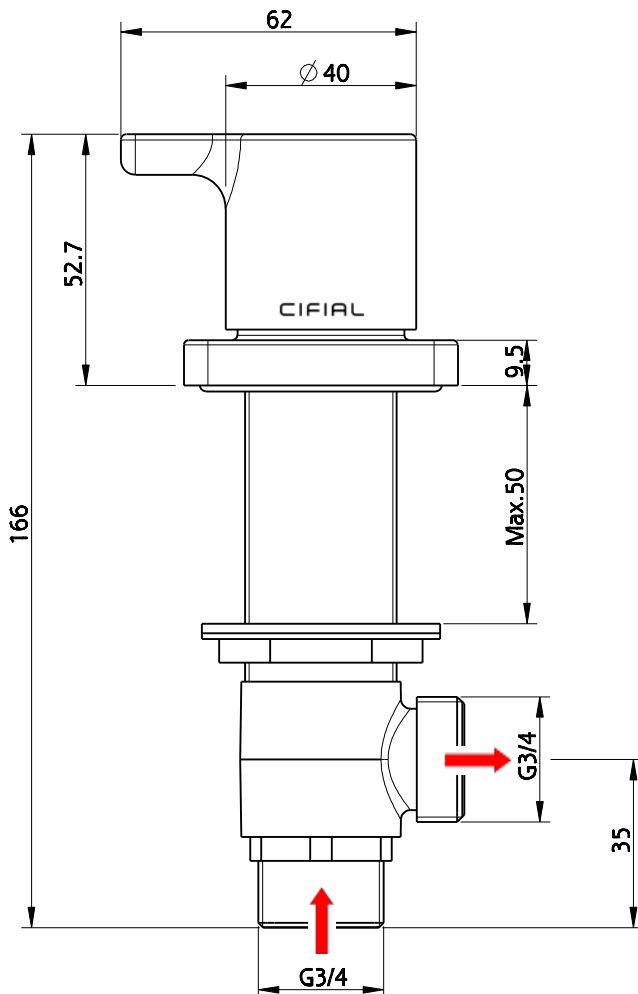
CIFIAL

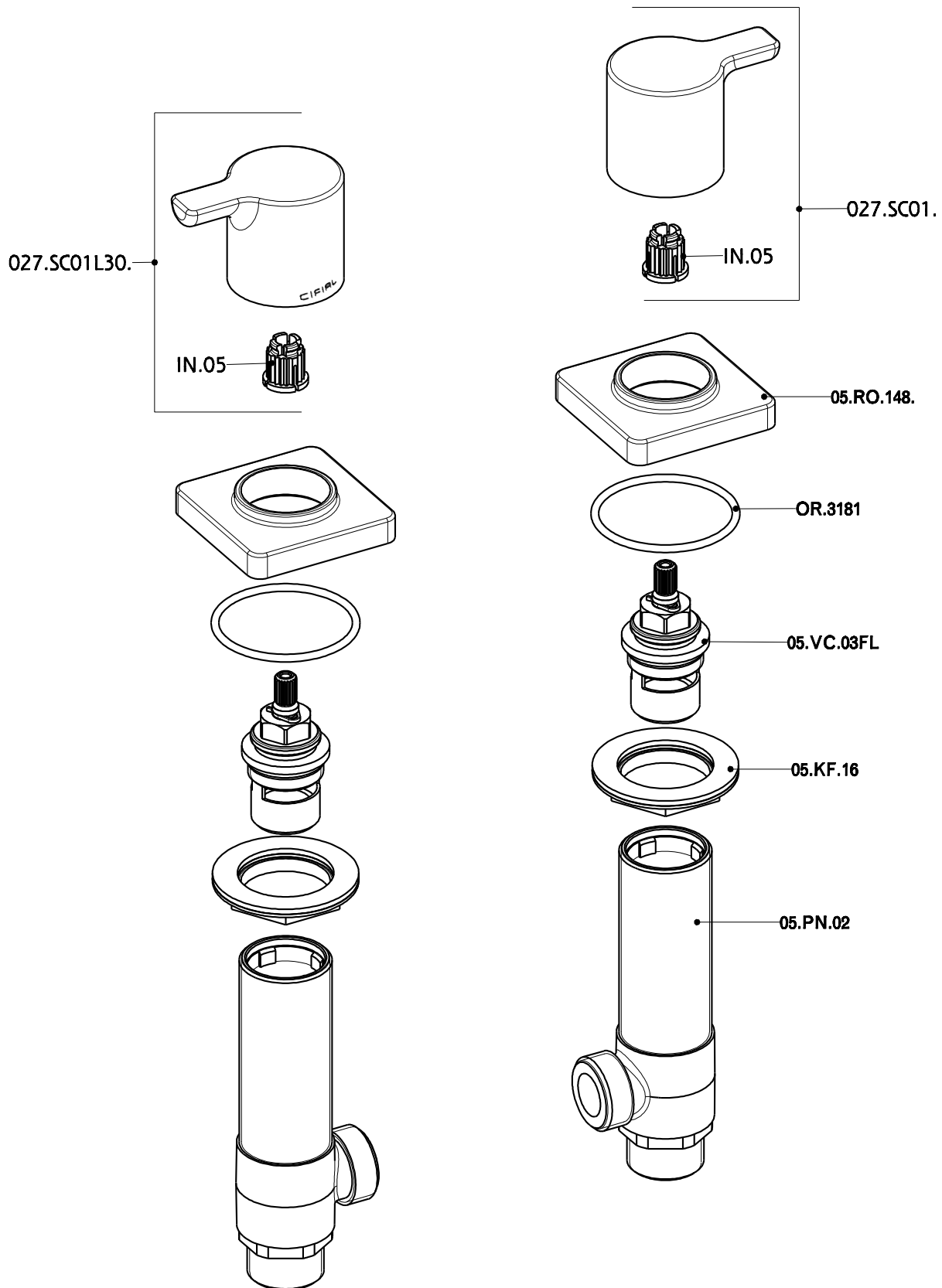
www.cifial.co.uk
cifialuk@btconnect.com

dimensions mm

COULE

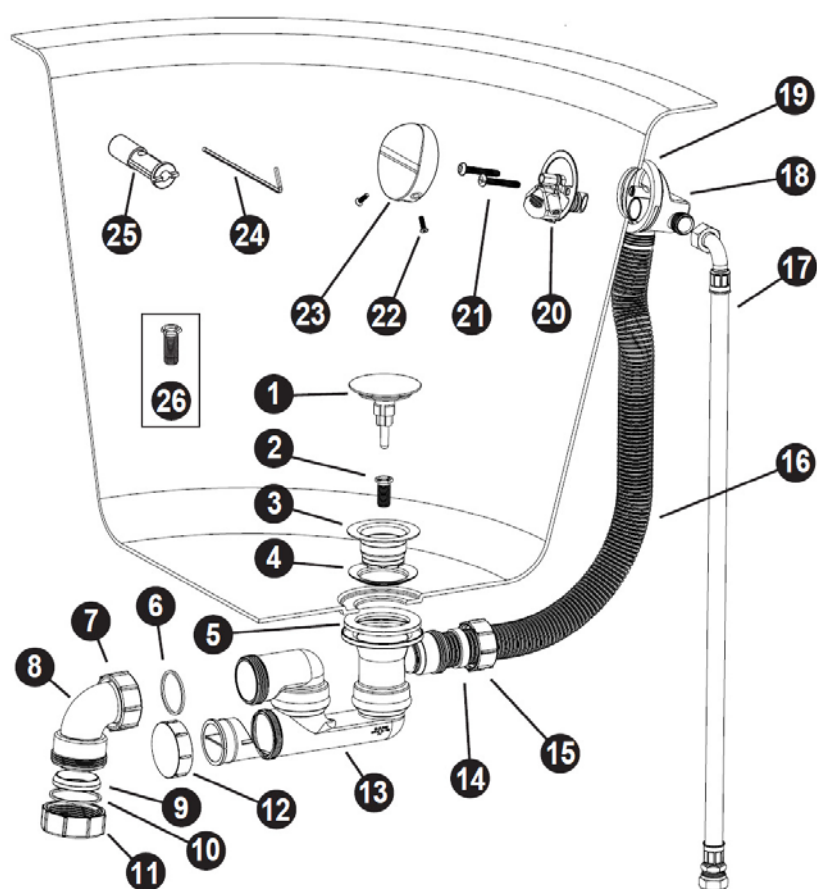
Pair Deck bath Valves

**CIFIAL**



with clic-clac waste

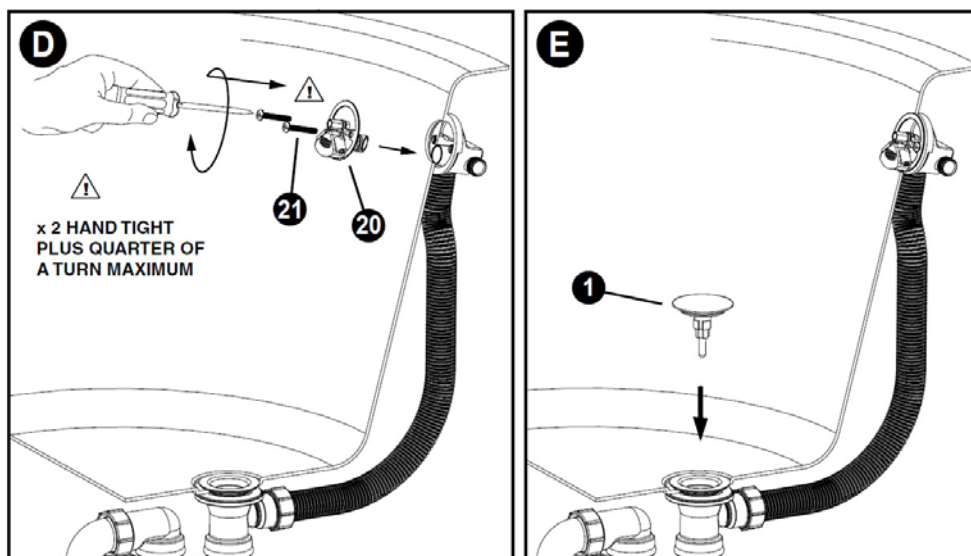
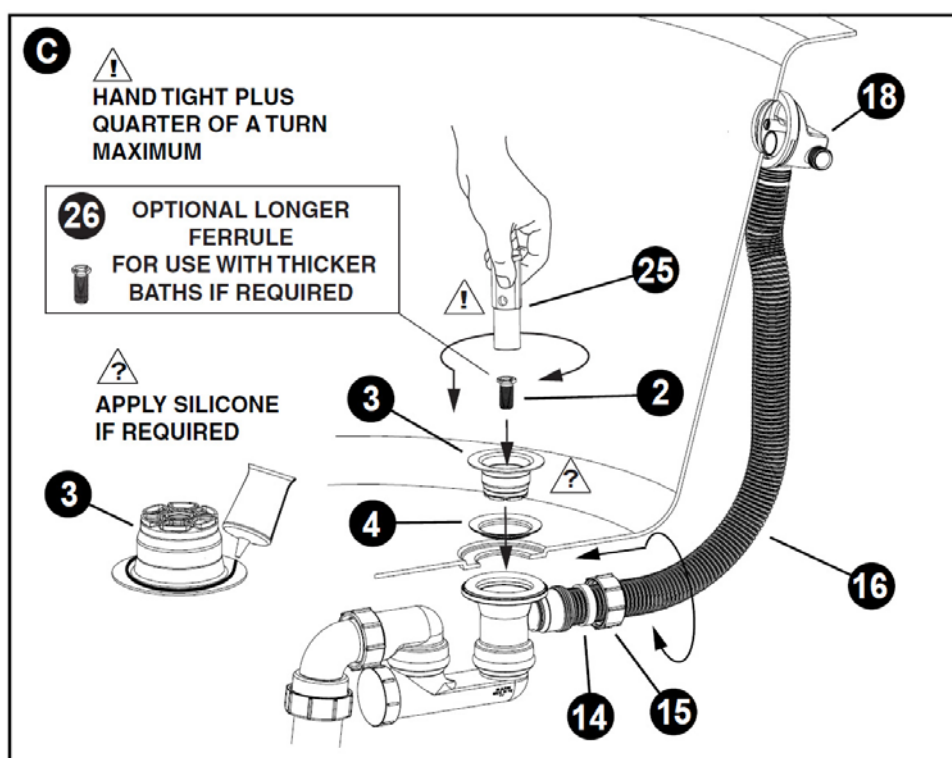
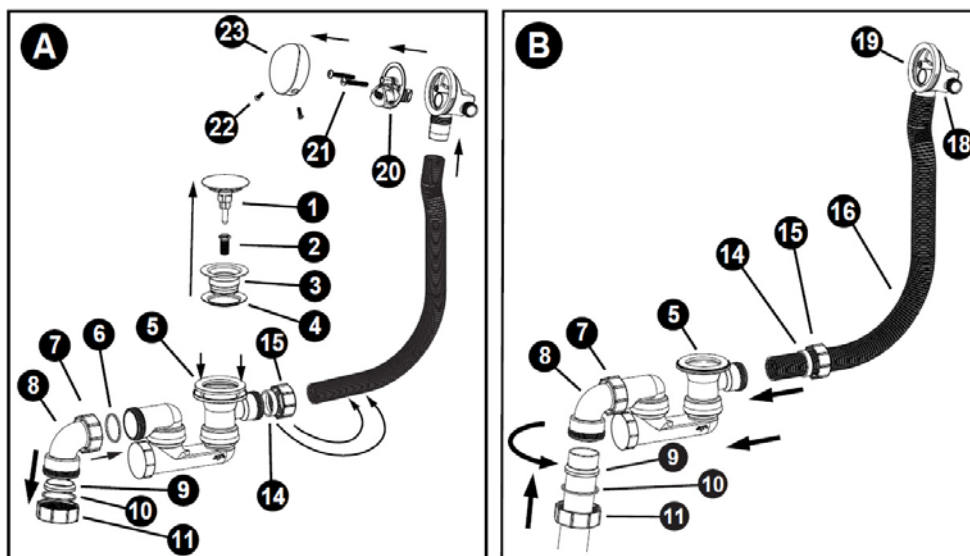
- | | |
|----|---|
| 14 | Rubber Seal |
| 15 | 1.25" BSP compression nut |
| 16 | Flexible overflow pipe |
| 17 | Flexible inlet hose |
| 18 | Overflow body |
| 19 | Rubber Overflow Seal |
| 20 | Overflow clamp plate / Nozzle body |
| 21 | Overflow clamp plate screws |
| 22 | Key Bolts (x2) |
| 23 | Overflow cover |
| 24 | Allen Hex Key for tightening |
| 25 | Plastic Key for tightening |
| 26 | Long ferrule (for use with thicker baths) |



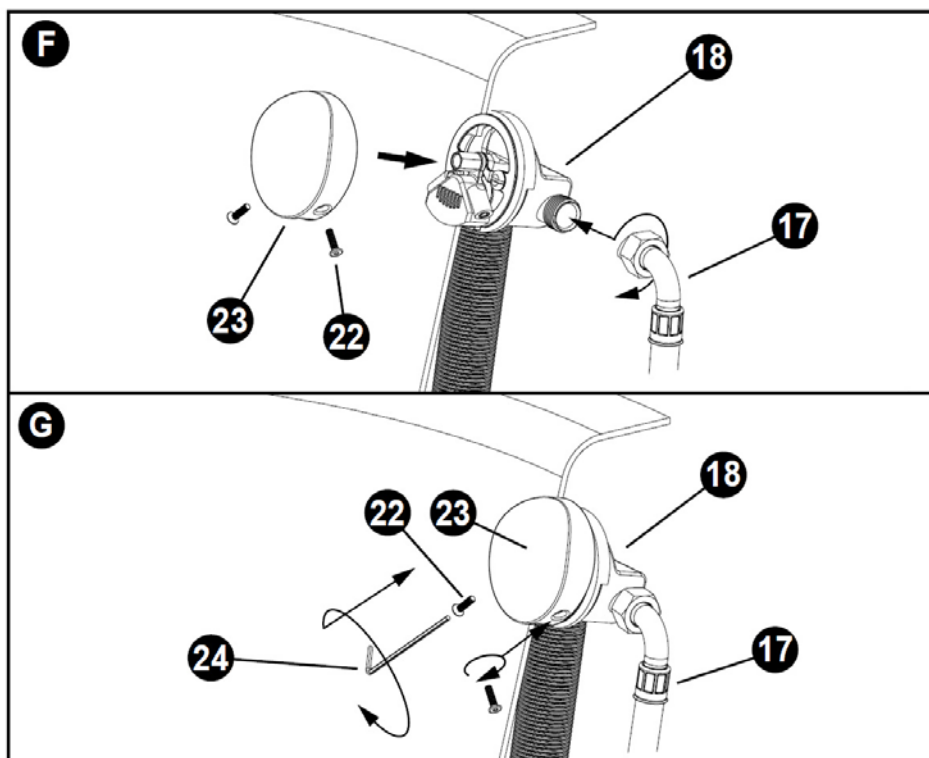
www.cifial.co.uk
cifialuk@btconnect.com

dimensions mm

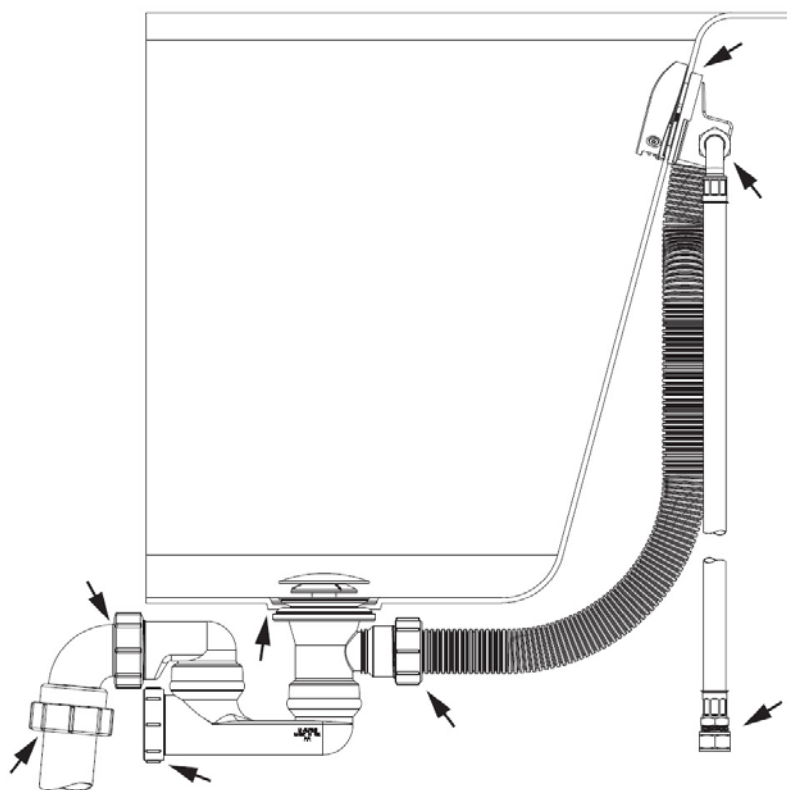
with clic-clac waste



with clic-clac waste



FILL BATH & CHECK FULL ASSEMBLY FOR LEAKS



- Mixer valve (not supplied) must be installed according to manufacturers guidelines and Local authority regulations.
- Protection against pollution of potable water installations and general requirements of devices to prevent pollution by backflow as detailed in EN 1717 should be observed.
- Flexible inlet pipe should be installed in a self-draining position.